

NORTHAMPTON BOROUGH COUNCIL

CABINET

Your attendance is requested at a meeting to be held at the Jeffery Room, Guildhall on Thursday, 15 March 2007 on the rising of the Special Council meeting.

M. McLean
Chief Executive

AGENDA

1. APOLOGIES
2. DEPUTATIONS/PUBLIC ADDRESSES
3. DECLARATIONS OF INTEREST
- 4. LOCAL DEVELOPMENT SCHEME (EI)
Report of Corporate Manager, Regeneration, Growth and
Community Development (copy herewith) C.
Cavanagh
x 8461
5. EXCLUSION OF PUBLIC AND PRESS
THE CHAIR TO MOVE:
"THAT THE PUBLIC AND PRESS BE EXCLUDED FROM THE
REMAINDER OF THE MEETING ON THE GROUNDS THAT
THERE IS LIKELY TO BE DISCLOSURE TO THEM OF SUCH
CATEGORIES OF EXEMPT INFORMATION AS DEFINED BY
SECTION 100(1) OF THE LOCAL GOVERNMENT ACT 1972 AS
LISTED AGAINST SUCH ITEMS OF BUSINESS BY
REFERENCE TO THE APPROPRIATE PARAGRAPH OF
SCHEDULE 12A TO SUCH ACT."

SUPPLEMENTARY AGENDA

**Exempted Under Schedule
12A of L.Govt Act 1972
Para No:-**

- | | | | | |
|------|----|--|-----|----------------------|
| .K.. | 6. | AWARD OF GAS SERVICING AND MAINTENANCE CONTRACT (RO)
Report of Corporate Manager, Street Scene and Property Maintenance (copy herewith) | (3) | C. Grimmer
x 7464 |
| | 7. | INTERIM CHIEF EXECUTIVE- CONTRACT (CPFSP)
Report of Solicitor to the Council (copy herewith) | (3) | J. Inch
x 7335 |

<TRAILER_SECTION>
A5286



**NORTHAMPTON
BOROUGH COUNCIL**

Name of Committee
CABINET

Directorate: People, Performance & Regeneration

Corporate Manager: Chris Cavanagh, Regeneration, Growth & Community Development

Date: 15 March 2007

Report Title

Northampton Local Development Framework – Revised Local Development Scheme

Key Decision

YES

1. Recommendations

- a) That Cabinet approves the revised Joint Local Development Scheme (LDS) for submission to the Government Office for the East Midlands (GOEM).
- b) That any modifications to that part of the revised Joint LDS accountable to this Council arising from comments from GOEM or as the result of consideration by Daventry and South Northamptonshire District Councils, be delegated to the Corporate Manager (Regeneration, Growth and Community Development) in consultation with the Portfolio Holder for the Economy and Infrastructure. Also, modifications required for parts not directly accountable to this Council be delegated to the Corporate Manager (Regeneration, Growth and Community Development).
- c) That the Local Development Scheme is brought into effect from 31 March 2007.
- d) That the Cabinet expresses its thanks to the Government Office for the East Midlands and Addison Associates in facilitating the discussions which have led to an agreed and revised Scheme.

2. Summary

- 2.1 The report explains the reasons for the need to submit a revised LDS and explains why a joint LDS has been prepared with Daventry and South Northamptonshire Councils. It describes the contents of the revised LDS, which is attached to the report as Appendix 1. A copy of the LDS timetable (Appendix 2) is attached to the report showing the timetable for documents to be prepared jointly with Daventry and South Northamptonshire Councils and documents to be prepared separately by the Borough Council. The report explains the process GOEM will follow after the revised LDS is submitted to them. The report explains why Council is required to keep the LDS under review and amend it as appropriate.

3. Report Background

Purpose

- 3.1 The Local Development Scheme (LDS) is a statutory document that the Council is required by the Planning and Compulsory Purchase Act 2004 to prepare as part of the Local Development Framework (LDF)
- 3.2 The LDS is a public statement of the Council's programme for the production of local development documents. It is the document that the public can use to ascertain what the local planning authority is proposing and when, and at what stage they can expect to be involved in the process. It also sets out the LDS commitment to delivery which it will be monitored against.

The LDS focuses on a three year time horizon and is kept under review by way of an Annual Monitoring Report (AMR) and rolled forward at appropriate times. The AMR will identify whether the Council is achieving the timetable set out in the scheme or if there is a need to revise and/ or prepare new local development documents.

- 3.3 The LDS sets out the following information:
- A brief description of all the local development documents to be prepared and the content and geographic area to which they will relate;
 - Which local development documents will be statutory development plan documents and which will be non-statutory supplementary planning documents;
 - Which policies and proposals in the existing Local Plan and supplementary planning guidance are to be saved;
 - Which, if any, local development documents are to be prepared on a joint basis with one or more local planning authorities;
 - The planned timetable for preparing each local development document and the key milestone to be achieved.

Recent Events

- 3.4 In September 2006, Cabinet agreed to the preparation of a Joint Core Strategy covering the whole of the administrative boundaries of Daventry District, Northampton Borough and South Northamptonshire Councils (the three Councils), and that a revised Local Development Scheme for Northampton be prepared for approval by Cabinet prior to submission to GOEM.
- 3.5 In December 2006, Cabinet approved a revised Joint Local Development Scheme for submission to GOEM.
- 3.6 The Joint LDS was subsequently submitted to GOEM in December 2006. GOEM sent a letter to the three Councils on 19 January 2007 stating that it was issuing a holding direction on the LDS. The legal implication of this direction is that the Councils cannot bring the LDS "into effect" i.e. they cannot publish the Issues and Options on the Joint Core Strategy.
- 3.7 Senior members from the three Councils have subsequently met with GOEM who have made it clear that with regard to those documents prepared by DDC and SNDC, the LDS needs to contain fewer documents and to provide more information on the resources that will be made available to deliver these documents. GOEM has also stated that the LDS must be brought into effect by 31 March 2007 in order to qualify for Planning Delivery Grant monies for plan making for next year.
- 3.8 Consequently the three Councils have jointly prepared a revised Joint Local Development Scheme (attached as Appendix 1). Each Council will have its own LDF but certain Local Development Documents (LDDs) will be common to each, including the overarching Joint Core Strategy Development Plan Document (DPD). All future LDDs must be in conformity with the Joint Core Strategy. This reflects the commitment of all of the Councils to joint working and the fundamental importance of the Joint Core Strategy to the whole LDF process. This represents a major step forward in joint working between the three LAs.
- 3.9 As well as the Joint Core Strategy the revised LDS commits the Councils to increased joint working with the preparation of a joint Northampton Implementation Area DPD, a joint Development Control Policies DPD, a joint Rural Areas DPD and a joint Affordable Housing SPD.
- 3.10 The LDS also sets out those LDDs that each of the three Councils intend to prepare individually over the next three years. For Northampton Borough Council, the DPDs that will be prepared are:
- Central Area Action Plan DPD
 - Sixfields Area Action Plan DPD

- 3.11 The timetable for all the documents to be prepared jointly by the three Councils and separately by each Council is shown as Appendix 2 to this report.
- 3.12 The timing of the DPDs and SPDs has reflected the following factors:
- Joint Core Strategy is the priority document. It is the overarching document that all subsequent documents must be in conformity with;
 - National, regional and local priorities including regeneration, growth and conservation objectives;
 - The need to co-ordinate, phase and deliver growth and infrastructure in the right locations and at the right time;
 - The presence of "Saved" Structure and Local Plan policies as the basis for development control decisions and supplementary planning documents;
 - Opportunities for combined community and technical stakeholder engagement reducing costs and enabling increased involvement;
 - The availability of key evidence such as the West Northamptonshire Housing Market Assessment;
 - The timetable for the review of the East Midlands Regional Plan; and
 - The availability of and requirement for the Councils' and partners' resources.
 - Take into account local election periods with associated purdah periods.
- 3.13 The time needed and resources available to produce each document have been rigorously tested using a methodology which identifies down to individual officer level the amount of time anticipated to be required in undertaking each stage. It is important that sufficient time is built into the programme to enable enough opportunity for proper member debate and reconsideration and this has been factored into each programme. Once approved, the timetable will become a measure against which the Councils performance is judged and planning delivery grant is awarded.
- 3.14 The delay in bringing a new local development scheme into effect and the re-assessment of time needed to complete each stage has had implications for the start and finish dates for each document. The timings of the Joint LDDs needs to be agreed by all three Councils. The timings of the individual LDDs for Northampton (Central Area and Sixfields LDD) is a matter for determination by the Borough Council alone.

3.15 Compared with the timetable submitted as part of the Joint LDS in December 2006 there have been the following differences to the planned adoption dates of the documents to be prepared jointly and individually by Northampton Borough Council:

Title of Document in Dec 2006 Joint LDS	Adoption Date in Dec 2006 Joint LDS	Title of Document in March 2007 Joint LDS	Adoption Date in March 2007 Joint LDS	Difference
Joint Core Strategy	March 2009	Joint Core Strategy	December 2009	9 Months
Joint Sustainable Urban Extension Area Action Plan (s) DPD	March 2010	Northampton Implementation Area DPD	February 2011	11 Months
Site Specific Allocations DPD	February 2010			12 Months
Development Control Policies DPD	January 2010	Joint Development Control Policies DPD	March 2011	14 Months
Central Area Action Plan DPD	July 2009	Central Area Action Plan DPD	May 2010	10 Months
Sixfields Area Action Plan DPD	October 2009 (includes 5 month acceleration previously requested)	Sixfields Area Action Plan DPD	February 2011	16 Months
Affordable Housing SPD	December 2007	Joint Affordable Housing SPD	November 2007	1 Month Earlier

3.16 At the Cabinet meeting in December members asked that the Sixfields DPD programme be advanced by five months compared with the recommendation which would have resulted in adoption in December 2009. The new and recommended programme for Sixfields DPD has an issues consultation co-inciding with the publication of a preferred option Core Spatial Strategy which will contain firm proposals relating to the future location, scale and future development of District Centres in Northampton. The Sixfields DPD process must take this Strategy into account. Once begun, the proposed programme for Sixfields matches the timetable for the Joint Allocations DPD, and DPDs for each key town in West Northamptonshire. Adoption is only nine months behind the DPD for Northampton Central Area. Final inspection of the Sixfields DPD will therefore take place in the context of an adopted

- Core Strategy and Central Area DPD and is the most robust and effective programme in order to arrive at a sound and adoptable plan.
- 3.17 Whilst all DPDs have therefore been subject to a extension in terms of planned adoption dates, the proposed adopted date for Sixfields appears longer owing to the Cabinet decision in December to advance the proposed timetable. For the reasons as set out in paragraphs 3.12 to 3.16, Members are at this time strongly advised to accept the new programme, for this and other DPDs.
- 3.18 The current Local Plan is 'saved' until September 2007. Supplementary planning guidance is also saved. The Council is working with GOEM to ensure that the most important policies continue to be saved for at least a further year after this date to ensure that there is a planning policy framework in place whilst the LDDs are prepared.
- 3.19 Assistance in developing the proposed documents and timetable has been gratefully received from the Planning Advisory Service through the Government Office for the East Midlands. Linda Addison of Addison Associates, a senior planning practitioner worked with the joint planning team, senior officers, the County Council and West Northamptonshire Development Corporation and finally senior members to derive a project timetable which is now acceptable to all parties. Officers are grateful for GOEM in making this service available to the Councils at no cost.
- 3.20 If agreed by the Cabinet, the LDS will be submitted to the Secretary of State (represented by the Government Office for the East Midlands) for approval. It will not be subject to independent examination and it will not be published for the public to make formal comment. The Government Office will assess whether the LDS is robust and deliverable, particularly in terms of priorities. It will also seek the comments of the Planning Inspectorate to ascertain whether the timetabling leading up to and including the Examination is realistic and achievable.
- 3.21 When the LDS takes effect a copy will be made available for inspection at the Council's offices at the Guildhall and Cliftonville House and it will be published on the website. All those interested in the development of the LDF will also be notified of the LDS' availability.

4. Options and Evaluations

- 4.1 Cabinet may decide not to approve the revised LDS. However, this is not recommended as the Council cannot bring any local development documents into affect until the LDS has been approved by the Government Office for the East Midlands. Furthermore, the amount of Planning Delivery Grant to be allocated to the Council next year will be

adversely affected if the LDS is not brought into effect by 31 March 2007.

4.2 The Cabinet may decide to make amendments to the revised LDS.

5. Resource Implications (including Financial Implications)

5.1 The revised LDS sets out which local development documents and supplementary planning documents will be produced, when and by which authorities. The revised LDS proposes that Northampton Borough, Daventry District and South Northamptonshire Councils will produce the Joint Core Strategy, Northampton Implementation Area DPD, West Northamptonshire Development Control Policies DPD, West Northamptonshire Rural Areas DPD and West Northamptonshire Affordable Housing SPD jointly.

5.2 In the development of the revised LDS the Councils have committed a significant amount of time to LDD programming and resource management. This process has involved detailed consideration of all the tasks required to produce each of the LDDs and co-ordinated allocation of resources to each of the tasks across the three Councils. For the purposes of programming the LDDs listed in the LDS, all of these resources have been viewed as a single pool of resources. In programming this available resource, allowances have been made for other areas of responsibility outside of LDF work. Examples of the wider responsibilities outside core LDF work are: Consultations, Development Control Advice and General Enquiries.

5.3 The work that the three Councils have completed on LDD programming and resource management for the revised LDS has indicated that there are enough staff resources across the three Councils to deliver the LDS.

5.4 The three Councils have already informally established the West Northamptonshire Joint Planning Unit (JPU). The JPU is responsible for preparing the joint DPDs and SPDs. Each Council will continue to be responsible for preparing DPDs and SPDs addressing local matters where joint agreement is not required although co-ordination of the overall programme of documents by the JPU will be necessary.

5.5 In order to formalise this, the JPU agreement has already been reached on the creation of a Joint Planning Unit Manager and resources from each Councils' existing LDF budgets allocated. In principal agreement has also been reached on the creation of a senior project manager post to support the JPU Manager in terms of project management, IT and office administration. Further consideration is required by the three Councils of the most appropriate model for

staffing the JPU. One option is to second staff from each Council for a fixed period to prepare the joint documents. However, this may lead to a need to redistribute work, reprioritise work, cease certain work or recruit further staff at each Council to replace the staff seconded to the JPU.

- 5.6 The Northampton Local Development Framework base budget is already allocated at £66,000 pa for the next three years and is currently further supported by Planning Delivery Grant, of which £367,000 has been available in 2006/7, £89,000 spent to date and some £258,000 is committed to delivery of the Local Development Framework, enhancing the planning policy service and responding to the growth agenda over the period 2006/7 – 2008/9
- 5.7 There may be opportunities in the medium-term for efficiencies through joint working in terms of sharing consultation, printing and technical consultancy service costs.

6. Risk and Opportunity Issues

- 6.1 In preparing the revised LDS it was found that the main areas of risk relate to:
- Staff turnover;
 - Capacity of the Planning Inspectorate and other agencies to cope with demand nationwide;
 - Programme slippage;
 - Political differences;
 - Delays in Examination process and/ or legal challenge;
 - Changes to national or regional guidance.
 - Pressure from external developer organisations;
- 6.2 The revised LDS identifies measures that will be taken to address these risks.
- 6.3 The three Councils have agreed that in addition to further consideration of the most appropriate model for staffing the JPU, consideration should also be given to the governance arrangements for the joint DPDs and SPDs.
- 6.4 The principal opportunity will be the strengthening of existing partnerships through joint working resulting in sounder policies.

7. Consultees (Internal and External)

Internal	Finance, Development Control,
-----------------	-------------------------------

External	Daventry District Council, South Northamptonshire Council, Northamptonshire County Council, Government Office for the East Midlands, West Northamptonshire Development Corporation.
-----------------	---

8. Compliance Issues

A: How Proposals Deliver Priority Outcomes

Recovery Plan
The LDF underpins the future regeneration, growth and conservation of Northampton and the Northampton Implementation Area. In particular it sets the framework for inward investment and the recovery of the heart of the Borough. Together with the Housing Strategy it provides the impetus for the recovery of key services including housing and the delivery of the Government's growth agenda. The LDF, therefore, underpins the Recovery Plan.
Corporate Plan
Priority 2 of the Corporate Priorities 2007-2011 is the most relevant to the LDF. Priority 2 is: Invest in the planning and regeneration of the Town, providing economic development and growth. Priority 1 is also relevant but to a lesser extent. Priority 1 is: Make Northampton a safer, cleaner and greener place to live.

B: Other Implications





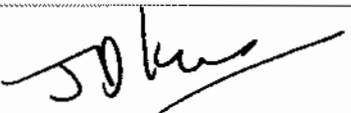
Other Strategies
The Local Development Framework influences and is influenced by all the Council's strategies and plans, including the Council's Housing Strategy, which was approved by Cabinet on 5 March 2007 and has been submitted to GOEM for approval.
As a spatial plan the Local Development Framework will guide the decisions of a wider range of organisations, agencies and individuals beyond the Council itself. These will include: the West Northamptonshire Development Corporation; Northamptonshire County Council; infrastructure and service providers such as the Highways Agency, the Primary Care Trust, Anglian Water, telecommunications and energy providers; environmental bodies such as the Environment Agency and the Wildlife Trust; voluntary agencies; registered social landowners; and land and property developers.
A key role of the Local Development Framework is to implement the Government's growth agenda as expressed in the Sustainable Communities Plan and the Milton Keynes and South Midlands Sub-Regional Strategy.

Finance Comments

Legal Comments

9. Background Papers

Title	Description	Source
Regional Spatial Strategy for the East Midlands (RSS8)	The development strategy for the East Midlands for the period up to 2021 within which the Local Development Framework will be prepared.	Government Office for the East Midlands
Northampton Local Development Framework – Revised Local Development Scheme	Report to Cabinet - 4 December 2006	Northampton Borough Council

Name	Signature	Date	Ext.
Author		9 March	8734
Planning Manager		9 March	8734
Corporate Manager		9 March	8461
Director		13 March	8531
Monitoring Officer or Deputy (Key decision only)		13 March 2007	7335
Section 151 Officer or Deputy (Key decision only)			

Contents

	Title	Page
1	Introduction: The Development Planning System	2
2	The Local Development Scheme	3
3	Delivering The Local Development Frameworks In West Northamptonshire	5
4	Future West Northamptonshire Joint LDDs	6
5	Future Daventry District Council LDDs	7
6	Future Northampton Borough Council LDDs	7
7	Future South Northamptonshire Council LDDs	7
8	Proposals Map	8
9	Statement of Community Involvement	8
10	Sustainability Appraisal	8
11	Saved Development Plan Policies	9
12	Saved Supplementary Planning Guidance	10
13	Resources and Reporting Processes	10
14	Risk Assessment	13
15	Evidence Base	14
16	Monitoring And Review	14
17	Contact Details	15
App 1	Main components of an LDF	16
App 2	Bibliography and Definitions	18
App 3	Profile of Joint Local Development Documents	22
App 4	Profile of Daventry District Council's Local Development Documents	29
App5	Profile of Northampton Borough Council's Local Development Documents	34
App 6	Profile of South Northamptonshire Council's Local Development Documents	37
App 7	Sustainability Appraisal and the Development Plan Process	42
App 8	Saved Supplementary Planning Guidance	44
App 9	Evidence Base	47
App 10	Composite timetable for the preparation of LDDs	50

1 INTRODUCTION: THE DEVELOPMENT PLANNING SYSTEM

- 1.1 In 2004 the Planning and Compulsory Purchase Act came into force. Through the Act the Government introduced a planning system whereby local plans and structure plans are replaced with the Local Development Framework (LDF). Together with the Regional Spatial Strategy the LDF will form the Development Plan, which is the basis for all planning decisions.
- 1.2 The LDF is the compendium of documents that will set out how an area will be developed in the future. The LDF will comprise Local Development Documents (LDD), which can either be Development Plan Documents (DPD), that are part of the statutory development plan or Supplementary Planning Documents (SPD), which can provide additional detail on policies or proposals set out in DPDs.
- 1.3 A LDF must include a Core Strategy, Site Specific Allocations of land, a Proposals Map and may also contain Area Action Plans, Development Control policies and other DPDs. These DPDs outline the key development goals of the LDF.
- 1.4 The LDF also includes the Statement of Community Involvement (SCI), the Local Development Scheme (LDS) and the Annual Monitoring Report (AMR). Furthermore each LDD must be accompanied by a Sustainability Appraisal incorporating Strategic Environmental Assessment and Appropriate Assessment, where appropriate, to ensure they reflect sustainable development principles. Appendix 1 sets out the main components of an LDF.
- 1.5 The LDF has introduced an entire new planning language. A glossary of abbreviations and definitions used in this LDS are explained in Appendix 2 to assist in understanding the planning jargon.
- 1.6 Further information on the new planning arrangements can be viewed using the following external website www.planningportal.co.uk

Relationship with other plans and strategies

- 1.7 All LDF documents will need to comply with the provisions of the relevant Regional Spatial Strategy. The Regional Spatial Strategy for the East Midlands (RSS), incorporating the Milton Keynes and South Midlands Sub Regional Strategy was published in March 2005. This is currently subject to review and update. The draft Regional Plan was issued for public consultation in September 2006 and the public examination is anticipated in May 2007. Latest information on the review can be found at www.emra.gov.uk
- 1.8 Structure Plans have been abolished under the new planning system, but there are policies in the adopted Northamptonshire Structure Plan that in the interim period will continue to provide pertinent guidance.

The East Midlands Regional Assembly, acting as regional planning body, will decide what elements of the Structure Plan need to be saved pending replacement by LDDs.

- 1.9 Each of the three local authorities within West Northamptonshire will produce its own LDF. Each of these will include documents such as the Core Strategy and other DPDs related to the growth of Northampton that are common to all of the authorities.
- 1.10 Each LDF will need to have regard to the Community Strategies. Community plans/strategies have been prepared for the three borough/districts and also for the county. These have been produced by the Local Strategic Partnerships. The spatial elements and other land use implications arising from these strategies will have to be addressed and delivered through the LDFs.
- 1.11 Each Council has other strategies that address specific issues. Several have land use implications and those in particular will need to be taken into account in preparation of the LDF. These relate to housing, economic development, air quality and waste management. The LDF will have particularly close links with the plans produced by the County Council, namely the Local Transport Plan and Minerals and Waste Development Framework.

2 THE LOCAL DEVELOPMENT SCHEME

- 2.1 Planning authorities are required to prepare and maintain a three year project plan to be referred to as a LDS. Essentially the LDS is a public statement identifying which LDDs will be produced and when. It has two key objectives:
 - It is the starting point for the community and stakeholders to find out about the Council's planning policies in respect of a particular place or issue, and what the status of those policies will be; and
 - It outlines the details of, and timetable for, the production of LDDs over the three year period
- 2.2 The LDS will form part of a public service agreement (PSA6) between the Council and the Government. The LDS includes 'milestones' that must be achieved to comply with the Government's public service agreement with the Council. The LDS will also be an effective tool in ensuring the Council is meeting its plan making targets (known as 'Best Value Performance Indicators') set by Government.
- 2.3 The Borough and District Councils will be responsible for much of the new plan-making system. However, Northamptonshire County Council, as the minerals and waste planning authority, will be responsible for preparing a minerals and waste development framework. A minerals and waste local development scheme has therefore been prepared,

and can be viewed on the County Council's website (<http://www.northamptonshire.gov.uk>). Further information is available from the County Council (telephone: 01604 236014).

Revised Local Development Scheme

- 2.4 This document has been produced jointly by Daventry District, Northampton Borough and South Northamptonshire Councils (the Councils). It supersedes the individual LDSs prepared by the individual councils and approved by the Government in spring 2005.
- 2.5 Since that time several LDDs included in the original LDSs have been adopted. These are:

Daventry District Council

- Statement of Community Involvement (March 2006);
- Daventry Design Codes SPD (December 2005);
- Daventry International Rail Freight Terminal Expansion Design Guide SPD (December 2005)
- Weedon Conservation Plan SPD (September 2005); and
- Concept Statement for Land to the North of Abbey Street (February 2005).

Northampton Borough Council

- Statement of Community Involvement (March 2006)
- Freeschool Street SPD (November 2005)

South Northamptonshire Council

- Statement of Community Involvement (April 2006)
- Reuse of Rural Buildings SPD (April 2005)

- 2.6 Whilst progress has been made in certain areas it is clear from the Councils' respective AMRs that progress on the Core Strategies and consequently other DPDs has slipped from the timetable identified in the original LDSs. Moreover the Councils resolved in September 2006 to work together in producing a single Core Strategy to cover the entire administrative area of Daventry, Northampton and South Northamptonshire.
- 2.7 In the context of the above, this revised LDS has been prepared jointly by the three local authorities. It sets out the LDDs that each Council intends to prepare either jointly or individually.
- 2.8 Appendix 3 of this LDS sets out a profile of each LDD that it is intended will be produced over the next 3 year period. A profile of each LDD is provided setting out:

- which authority or authorities will be responsible and accountable for its preparation,
- its role and position in the chain of conformity,
- Its geographical coverage,
- Its status as a DPD or SPD,
- its key milestones for production,
- a broad indication of resource requirement and
- an approach to involving stakeholders and the community.

2.9 The LDS is available for viewing from any of the Councils websites at:

www.daventrydc.gov.uk
www.northampton.gov.uk
www.southnorthants.gov.uk

2.10 Its availability will also be advertised in the local media. The Councils will write to all people on its mailing list informing them of its availability.

3 DELIVERING THE LOCAL DEVELOPMENT FRAMEWORKS IN WEST NORTHAMPTONSHIRE

Joint and Partnership Working

- 3.1 The RSS, incorporating the Milton Keynes and South Midlands Sub-Regional Strategy identifies Daventry, Northampton and Towcester as locations for growth in West Northamptonshire. Significantly, it promotes joint working to address the sub-regional proposals.
- 3.2 The Councils are committed to putting in place an up to date planning policy framework for the growth of West Northamptonshire at the earliest opportunity. The RSS is critical to this process as it provides the overall strategy and housing, employment and infrastructure requirement for local policies. The proposed LDDs set out in this document are based on the current understanding of the future planning requirements for West Northamptonshire.
- 3.3 The Councils are committed to working together with Northamptonshire County Council and West Northamptonshire Development Corporation in order to implement the growth in an effective, cohesive and sustainable manner.
- 3.4 A Joint Member Steering Group has been set up to take forward plans relating to West Northamptonshire. The Planning Group will comprise member and officer representatives from Daventry, South Northamptonshire and Northampton Borough Councils, as local planning authorities responsible for preparing LDDs. Northamptonshire County Council, as strategic authority with responsibility for transport, education, minerals and waste planning; and West Northamptonshire Development Corporation as the local delivery vehicle are also represented on the Group.

- 3.5 The purpose of the Steering Group is to act as a sounding board for the three local planning authorities and to provide a clear steer to ensure agreement over the joint LDDs, in particular the joint core strategy, and the timetabling of such work and to consider any other matter of common interest to the local planning authorities and strategic authority related to spatial planning within the three districts. The Steering Group will not have any executive powers, but will provide the mechanism by which consensus can be achieved between the three district authorities.
- 3.6 The three Councils have established the Joint Planning Unit (JPU). The JPU is responsible for preparing the joint Local Development Documents. Each district/ borough Council continues to be responsible for preparing Local Development Documents addressing local matters and joint agreement is not required although coordination of the overall programme by the JPU will be necessary.

4 FUTURE WEST NORTHAMPTONSHIRE JOINT LDDs

- 4.1 In accordance with the Government's advice, the key priority in the LDS is the joint Core Strategy DPD. This DPD will be fundamental to the LDF. The Core Strategy DPD is a strategic document that will set out a vision for the development of West Northamptonshire and a proposed approach to a range of spatial and strategic development issues. The Strategy represents a key phase to establish the broad planning framework for the area as part of a series of new planning documents that will replace the existing Local Plans. This includes setting out the amount of land and broad locations for future housing and employment requirements. Following adoption, all future DPDs must be in conformity with the Core Strategy. Subsequent LDDs commencing next year (2007/08) will deal with site-specific policies including housing and employment allocations.
- 4.2 As well as the Joint Core Strategy the Councils are also committed to preparing three other joint DPDs as follows:
- Northampton Implementation Area (NIA) DPD
 - West Northamptonshire Rural Areas DPD
 - West Northamptonshire Development Control Policies DPD
- 4.3 The preparation of these joint LDDs will follow the Joint Core Strategy and set out the locations, phasing and infrastructure requirements of growth proposals related to the expansion of Northampton and any development of West Northamptonshire's rural areas. The joint production of these documents is considered to be of key importance to the future planning of West Northamptonshire.

- 4.4 The Councils are producing a Joint Affordable Housing SPD. Many of the issues are common to the three authorities and the Housing Market Assessment, part of the evidence base, covers the three authorities. Such an approach is considered to represent the best use of resources and will demonstrate a consistent approach across West Northamptonshire. Daventry and South Northamptonshire Councils have also prepared a joint SPD on Energy Efficiency and Renewable Energy. The Timetable for the preparation of these LDDs is set out in Appendix 10.

5 FUTURE DAVENTRY DISTRICT COUNCIL LDDs

- 5.1 In addition to the joint LDDs set out above, Daventry District Council is committed to preparing the following DPDs and SPDs based on the timetable set out in Appendix 4. The milestones used in this appendix are based on paragraph 3.22 of PPS12 and Best Value Performance Indicator 200 (b). A composite timetable showing both joint and individual LDD timetables is in Appendix 10.

- Daventry Town DPD
- Development Guidance for Middlemore SPD
- Village and Town Design Statements SPD

6 FUTURE NORTHAMPTON BOROUGH COUNCIL LDDs

- 6.1 In addition to the joint LDDs set out above Northampton Borough Council is committed to preparing the following DPDs based on the timetable set out in Appendix 5. The milestones used in this appendix are based on paragraph 3.22 of PPS12 and Best Value Performance Indicator 200 (b). A composite timetable showing both joint and individual LDD timetables is in Appendix 10.

- Central Area Action Plan DPD
- Sixfields Area Action Plan DPD

7 FUTURE SOUTH NORTHAMPTONSHIRE COUNCIL LDDs

- 7.1 In addition to the joint LDDs set out above South Northamptonshire Council is committed to preparing the following DPDs and SPDs based on the timetable set out in Appendix 6. The milestones used in this appendix are based on paragraph 3.22 of PPS12 and Best Value Performance Indicator 200 (b). A composite timetable showing both joint and individual LDD timetables is in Appendix 10.

- Towcester Town DPD
- Brackley Town DPD

- Moat Lane, Towcester SPD
- Silverstone Circuit SPD

8 PROPOSALS MAP

- 8.1 A Proposals Map, prepared for each of the LDFs, will express geographically the adopted development plan policies of each of the local planning authorities. In accordance with Regulation 13(4) of the Regulations, the Councils will include a submission Proposals Map when they bring forward the Joint Core Strategy, West Northamptonshire Development Control Policies DPD and other DPDs where site allocations are made. These will indicate how the policies in the submitted documents will change the existing Local Plan Proposals Maps, which will continue to be saved under the transitional arrangements (see paragraph 11.3). The local planning authorities will bring forward the adopted Proposals Maps when DPDs covering site specific policies and development control policies are adopted. They will be revised as each new DPD is adopted, to ensure that they always reflect the up-to-date spatial plan for the area.

9 STATEMENT OF COMMUNITY INVOLVEMENT

- 9.1 Each district/borough Council adopted a SCI in spring 2006. These set out how the community will be involved in the preparation of LDDs and consulted on planning applications. Each SCI will be monitored on an annual basis and the need for review will be assessed as part of the preparation of the individual Council's AMRs.

10 SUSTAINABILITY APPRAISAL

- 10.1 At each key stage of its preparation each DPD and SPD will be appraised to assess the likely environmental, social and economic affects of its policies and proposals. The findings will be detailed in a Sustainability Appraisal (SA) Report which will be subjected to public consultation. This SA will be an integral part of the preparation process of each LDD and will help arrangements for monitoring and implementation. The purpose of the Sustainability Appraisal is to promote sustainable development through better integration of sustainability considerations into the preparation of plans.
- 10.2 There are five key stages in the preparation of a SA for a LDD. These are set out in the table below:

Stage	Summary	DPD	SPD
A	Identifying other relevant policies, plans and programmes and collecting baseline information;	Yes	Yes
	Identify sustainability issues and problems;	Yes	Yes
	Develop a sustainability framework including objectives and indicators;	Yes	Yes
	Consult on the scoping Report	Yes	Yes
B	Test the LDD objectives against the SA Framework	Yes	Yes
	Developing the LDD options	Yes	Yes
	Predicting the effects the LDD	Yes	Yes
	Evaluating the effects of the LDD	Yes	Yes
	Considering ways of mitigating adverse effects and maximising beneficial effects	Yes	Yes
	Proposing measures to monitor the significant effects of implementing the LDDs	Yes	Yes
C	Prepare the SA Report	Yes	Yes
D	Public participation on the LDD and the SA Report	Yes	Yes
	Appraising significant changes	Yes	Yes
	Appraising significant changes resulting from representations	Yes	No
	Making decisions and providing information	Yes	Yes
E	Finalising aims and methods for monitoring	Yes	Yes
	Responding to adverse effects	Yes	Yes

10.3 Appendix 7 sets out the relationship between the preparation of LDDs and the Sustainability process.

11 **SAVED DEVELOPMENT PLAN POLICIES**

11.1 The documents to be produced as part of the LDFs will gradually replace the existing local plans. In the meantime, the Government has made provisions for local plan policies and proposals to be saved i.e. remain in force until September 2007.

11.2 Since adopting the Local Plan, Daventry District Council has prepared and consulted upon a series of formal alterations. These alterations have not been subject to public local inquiry and in accordance with the arrangement of the new planning system cannot be formally 'saved'; however the Council considers that the alterations remain relevant and will be retained as an important consideration in the determination of planning applications until withdrawn or replaced by DPDs or SPDs.

11.3 All of the three local authorities will be seeking the Secretary of State's agreement to issue a direction to save certain policies contained in

their respective Local Plans until such time as they are replaced by appropriate parts of the LDFs. In considering which policies to save, the Councils will need to demonstrate that:

- the policies reflect the principles of LDF;
- the policies are consistent with current national policy; and
- it is not feasible or desirable to replace them by September 2007.

11.4 The Councils will be submitting a statement requesting the saving of policies to the Government Office by April 2007.

12 SAVED SUPPLEMENTARY PLANNING GUIDANCE

12.1 The three local authorities currently have some existing supplementary planning guidance (SPG) that is based on policies in existing plans.

12.2 The new planning system does not allow for the 'saving' of existing SPGs as SPDs. Therefore, if SPGs are to be converted to SPDs, they must be prepared in accordance with Government Guidance and Regulations. This requires SPDs to conform to policies included in a DPD. It is envisaged that SPDs will generally follow on from policies included in the Core Strategy.

12.3 In the interim, the existing SPGs listed in Appendix 8 will continue to be used as material planning considerations in determination of planning applications, until such time as they can be replaced with SPDs.

13 RESOURCES AND REPORTING PROCESS

13.1 In the development of this LDS the Councils have committed a significant amount of time to LDD programming and resource management. This process has involved detailed consideration of all of the tasks required to produce each of the LDDs and coordinated allocation of resources to each of the tasks across the three Councils. For the purposes of programming the LDDs listed in this LDS all of these resources have been viewed as a single pool of resources. In programming this available resource, allowances have been made for other areas of responsibility outside of LDF work. Examples of the wider responsibilities that have been accounted for are listed below:

- Consultations
- Development Control Advice
- General Enquiries
- Team Meetings
- Appraisals
- Training

- 13.2 The Councils are seeking the appointment of a Joint Planning Manager to supervise and coordinate the work programme of the joint LDDs. To enable the effective project management of these LDDs prior to this appointment each joint LDD has been allocated an interim lead officer from the Joint Planning Unit (JPU). This information can be found in the profile of each joint document held at appendix 3.
- 13.3 The JPU will report to the West Northamptonshire Programme Board. This Board comprises heads of planning from the 3 districts and County Council as well as representatives from GOEM and WNDC.
- 13.4 The West Northamptonshire Joint Steering Group has been established between Northampton Borough, Daventry District and South Northamptonshire Councils to oversee the preparation of joint LDDs and associated studies and to discuss common planning issues between the three Districts. It comprises two members from each Council with the active involvement of the County Council and the West Northamptonshire Development Corporation expected also.
- 13.5 Key decisions relating to the joint LDD process will be taken by each of the three District and Borough Councils' Cabinets or Strategy Groups or by meetings of respective full Councils.
- 13.6 The core resources available to progress work on the LDDs identified in this LDS are outlined below. In addition each of the Councils will utilise resources from a range of internal teams such as:
- Housing Strategy
 - Conservation
 - GIS
 - Community Development
 - Administrative Support

Daventry District Council

- 13.7 The Planning Policy and Housing Strategy Team will be responsible for the preparation of the Daventry District Local Development Framework. The following core staff resources are currently available to undertake the work:
- 1 x Planning Policy and Housing Strategy Manager
 - 3 x Senior Planning Officers.
- 13.8 The team has other responsibilities in addition to preparing the LDF examples of which are listed in paragraph 13.1. These responsibilities have been accounted for when considering the resource available for LDF work. There are also resources available beyond the core Planning Policy Team that can make significant contributions to the work programme set out in this LDS. These resources will be utilised where appropriate.

- 13.9 Consultants have been employed to assist in preparing aspects of the evidence base. (e.g. Development options). Authorisation has been given to utilising Planning Delivery Grant to commission consultants to assist in preparing aspects of the evidence base and, if necessary, LDDs.
- 13.10 Key decisions relating to the LDF process will be taken by the Council's Strategy Group and Full Council.

Northampton Borough Council

- 13.11 The Planning Policy, and Conservation Team will be responsible for the preparation of the Northampton LDF. The following core staff resources are currently available to undertake the work:
- 1 x Planning Policy and Conservation Manager
 - 2 x Principal Planning Officers
 - 5 x Senior Planning / Planning Officers.
 - 1 Community Involvement Officer
- 13.12 The Team has other responsibilities in addition to preparing the LDF examples of which are listed in paragraph 13.1. These responsibilities have been accounted for when considering the resource available for LDF work. There are also resources available beyond the core Planning Policy Team that can make significant contributions to the work programme set out in this LDS. These resources will be utilised where appropriate.
- 13.13 Consultants have been employed to assist in preparing aspects of the evidence base. (e.g. Northampton Retail Study). Consideration will be given to utilising Planning Delivery Grant to commission consultants to assist in preparing aspects of the evidence base and, if necessary, LDDs.
- 13.14 Key decisions relating to the LDF process will be taken by the Council's Cabinet.
- 13.15 The Borough Council has established a LDD Steering Group. The Group has no decision-making powers, reporting directly to the Council's Cabinet. The Steering Group will meet periodically as and when different stages of LDD preparation are reached, ensuring that Members are fully involved in the process. The Steering Group includes the Chair of Planning Committee, the Portfolio Holder for Economy and Infrastructure and the Chair of Overview and Scrutiny Committee.

South Northamptonshire Council

13.16 The Planning Policy Team will be responsible for the preparation of the South Northamptonshire LDF. The following core staff resources are currently available to undertake the work:

- 1 x Policy and Implementation Manager
- 2 x Principal Planning Officers
- 3 x Planning Officers

13.17 The Team has other responsibilities in addition to preparing the LDF examples of which are listed in paragraph 13.1. These responsibilities have been accounted for when considering the resource available for LDF work. There are also resources available beyond the core Planning Policy Team that can make significant contributions to the work programme set out in this LDS. These resources will be utilised where appropriate.

13.18 Consultants have been employed to assist in preparing aspects of the evidence base (e.g. Towcester Masterplanning). Consideration will be given utilising Planning Delivery Grant to commission consultants to assist in preparing aspects of the evidence base and, if necessary, LDDs.

13.19 Key decisions relating to the LDF process will be taken by the Council's Cabinet and Full Council.

13.20 The Council has established a LDF Steering Group. The Group has no decision-making powers, reporting directly to the Council's Executive. The Steering Group will meet periodically as and when different stages of LDD preparation are reached, ensuring that Members are fully involved in the process. The Steering Group includes the Chairman of the Development Control Committee, the Portfolio Holder for the Built Environment Safeguarding Rural Communities, and a cross party representation of other elected members.

14 RISK ASSESSMENT

14.1 In preparing the LDS, it was found that the main areas of risk relate to:

- **Staff turnover.** Loss of staff will have an impact on the LDF programme, as recruiting and then training up replacement staff takes time. Nationally, there is a serious shortage of experienced planning officers. Consideration will be given to additional secondments from existing staff and/or using consultants to fill the gap.
- **Capacity of the Planning Inspectorate and other agencies to cope with demand nation-wide.** This is out of the control of the local authorities. However, early consultation has been undertaken

on this LDS, which should enable other agencies to take the Councils' LDF programme into account.

- **Programme slippage.** Some slack has been built into the programme for contingency.
- **Political differences.** The arrangements for managing the process, referred to above, are designed to ensure a measure of consensus is reached by the Steering Group before decisions are reached at each Council's Executive.
- **Delays in Examination process and/or legal challenge.** This will be minimised by ensuring that DPDs are 'sound' and founded on a robust evidence base and well-audited stakeholder & community engagement systems.
- **Changes to national or regional guidance.** The LDS takes into account the programme for the Regional Plan. Any slippage in this programme will impact on the LDF process. Where possible changes to Government guidance will be accommodated as part of the LDF process. However major changes to Government policy may result in delays that are outside the control of the Councils.

15 EVIDENCE BASE

- 15.1 In preparing the LDFs, a range of background work needs to be undertaken or taken into account. This work will be published in the form of background documents. Most of these will be produced either by, or for, the Councils. Each background document will be publicly available and will be available at the same time as, or before, any LDD which relies on its contents for a justification.
- 15.2 Some of these background documents can be identified now, but others may be published in the course of preparing LDDs. Appendix 9 contains a list of existing and anticipated background documents. An ongoing process of review and management of the evidence base will be undertaken in relation to each of the LDDs identified in this LDS. This process will allow the continuous monitoring of individual areas of the evidence base and the critical stages that must be reached to ensure achievement of the key milestones for LDDs.

16 MONITORING AND REVIEW

- 16.1 Following its adoption the LDS will be monitored on an annual basis from April to the end of March. The AMR will assess the implementation of the LDS and the extent to which policies in LDDs are being achieved. Each year a report will be prepared that will include an assessment of:
- whether the local planning authorities are meeting, or on track to meet, the targets set in LDDs and if not the reasons why;
 - what impact the local planning authorities policies are having on other targets set at national, regional or local level;

- whether the local planning authorities need to replace any policies in order to meet their sustainable development objectives; and
- what action needs to be taken if policies need to be replaced.

16.2 The AMR, which will be available to view on the Council's websites, will be used to determine whether there is a need to amend the LDS.

17 CONTACT DETAILS

17.1 If you have any queries on this LDS please contact us using the details below. For specific contacts on joint documents please contact the interim lead officers specified in the document profiles in appendix 3.

For documents that are the responsibility of Northampton Borough Council

Claire Berry
Principal Planning Officer
Planning Policy and Conservation
Northampton Borough Council
Cliftonville House
Northampton NN4 7NR

Telephone 01604 837834
cberry@northampton.gov.uk

For documents the responsibility of Daventry District Council

Richard Wood
Planning Policy and Housing Strategy
Manager
Daventry District Council
Lodge Road
Daventry
Northamptonshire NN11 4FP

Telephone 01327 302582
rwood@daventrydc.gov.uk

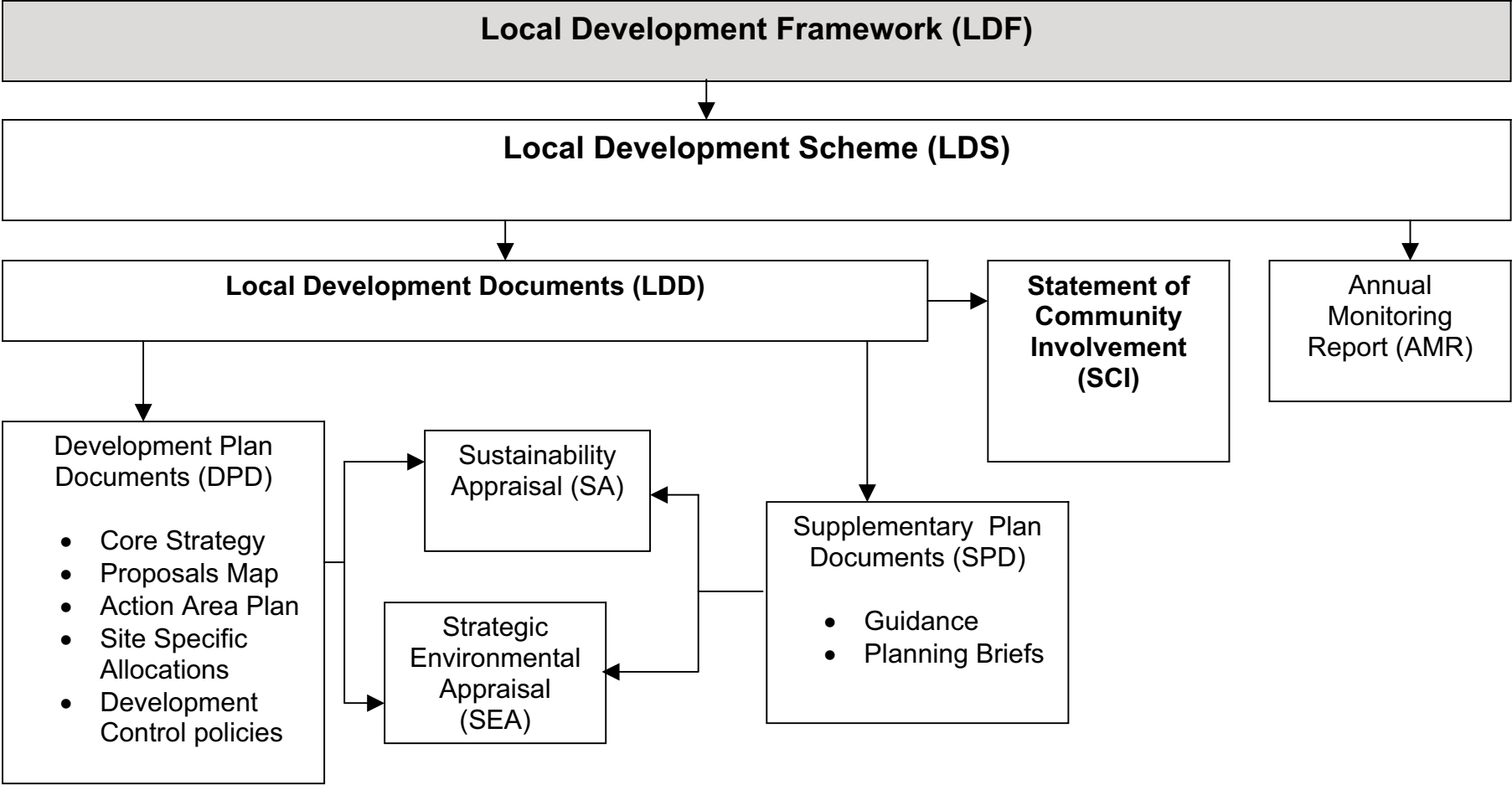
For documents the responsibility of South Northamptonshire Council

Andy D'Arcy
Principal Planning Officer
South Northamptonshire Council
Springfields
Towcester
Northamptonshire NN12 6AE

Telephone 01327 322267
Planning.policy@southnorthants.gov.uk

Appendix 1

Main components of an LDF



Appendix 2

Bibliography and Definitions

Bibliography

- Planning and Compulsory Purchase Act 2004
- The Town And Country Planning (Local Development) (England) Regulations 2004
- Consultation Draft Local Development Frameworks Guide to Procedures and Code of Practice October 2003
- Creating Local Development Frameworks: A Companion Guide to PPS12 . Consultation Draft on the process of preparing Local Development Frameworks (November 2004)
- Planning Policy Statement 12 (PPS12): Local Development Frameworks
- Development Plans Examination – A Guide to the Process of Assessing the Soundness of Development Plan Documents (December 2005)

Title	Definition
Area Action Plan (AAP)	Development Plan Document providing a planning framework for areas of change and areas of conservation.
Annual Monitoring Report (AMR)	Assesses the implementation of the LDS and extent to which the policies in LDDs are being achieved.
Appropriate Assessment	Assessment of the potential impact of a proposed plan on one or more European sites comprising Special Areas of Conservation and Special Protected Areas.
Community Strategy	Strategy prepared by Local Strategic Partnerships with the purpose of improving the social, economic, environmental well-being of their areas.
Core Strategy (CS)	Sets out the long-term spatial vision for the local planning authority area and the strategic policies and proposals to deliver that vision.
Department of Communities and Local Government (DCLG)	The Government department with responsibility for planning and local government.
Development Control Policies	A suite of criteria-based policies which are required to ensure that all development within the area meets the vision and strategy set out in the core strategy.
Development Plan (DP)	Consists of Regional Spatial Strategy (RSS) and development plan documents contained within the Local Development Framework.
Development Plan Document (DPD)	Spatial planning documents that are subject to independent examination. There will be a right for those making representations

Title	Definition
	seeking change to be heard at an independent examination.
Key Diagram	Diagrammatic interpretation of the spatial strategy as set out in the core strategy. To illustrate the broad strategy for the area in a similar fashion to existing Structure Plan's key diagrams. It is most likely to be appropriate to an area of significant change where the general location of broad areas of future development can be identified together with linkages between such areas and the relationship to other strategies and neighbouring areas. Broad areas of protection/little anticipated change can also be shown.
Local Development Document (LDD)	A document that forms part of the Local Development Framework. Can either be a Development Plan Document or a Supplementary Planning Document.
Local Development Framework (LDF)	Comprises a portfolio of local development documents which will provide the framework for delivering the spatial planning strategy for the area.
Parish plan	An initiative whereby local people can prepare a document that sets out their wishes for the development of their area.
Planning Policy Statement (PPS)	Government statements of national planning policy guidance. RSS and LDFs must be consistent with PPSs. Formally known as Planning Policy Guidance (PPG).
Pre-examination meeting	Procedural meeting held by Inspector appointed to hold examination into the DPD or SCI. The purpose of the meeting is to discuss the management of the examination.
Proposals Map	Illustrates the policies and proposals in the development plan documents and any saved policies that are included in the local development framework.
Regional Spatial Strategy (RSS)	Prepared by the regional planning body. It will set out the policies in relation to the development and use of land in the region and will be approved by the First Secretary of State. (Formally known as Regional Planning Guidance RPG)
Sustainability Appraisal (SA)	An Appraisal to ensure that all policies and proposals in Development Plan Documents (DPD) reflect sustainable proposals. This will be carried out at the same time as the

Title	Definition
Site specific allocations and policies	<p>Strategic Environmental Assessment (SEA)</p> <p>Allocations of sites for specific or mixed uses or development. Policies will identify any specific requirements for individual proposals.</p>
Statement of Community Involvement (SCI)	<p>Sets out the standards which the local authority intends to achieve in relation to involving the community in the preparation, alteration and continuing review of all local development documents and in significant development control decisions, and also how the local planning authority intends to achieve those standards. The statement of community involvement will not be a development plan document but will be subject to independent examination. A consultation statement showing how the local planning authority has complied with its statement of community involvement will be required for all local development documents.</p>
Strategic Environmental Assessment (SEA)	<p>A generic term used internationally to describe environmental assessment as applied to policies, plans and programmes. The European 'SEA Directive' (2001/42/EC) requires a formal 'environmental assessment' of certain plans and programmes, including those in the field of planning and land use.</p>
Saved Plan	<p>Existing adopted plans (or parts of them) can be saved for three years from the date of commencement of the Act. Unadopted plans can be saved for three years post adoption.</p>
Supplementary Planning Document (SPD)	<p>Policy guidance to supplement the policies and proposals in development plan documents. They will not form part of the development plan or be subject to independent examination. (Formally known as Supplementary Planning Guidance SPG)</p>

Appendix 3

Profile of Joint Local Development Documents

West Northamptonshire Joint Core Strategy DPD		
Brief Description		
To set out the spatial vision, spatial objectives and policies including the context for area action plans, site specific allocations, the Rural Areas DPD and other DPDs and SPDs covering sustainable urban extensions and associated strategic infrastructure, transport and phasing as well as a monitoring and implementation framework for Daventry and South Northamptonshire districts and the Borough of Northampton. It will also set out the hierarchy and role of the settlements in West Northamptonshire, including the villages. It will set out the retail hierarchy including the role and broad location of district/ local centres and other retail developments. It will include consideration of the role of the rural areas including conservation, protection and diversification. It will include consideration of the relationship between West Northamptonshire and its wider context.		
Geographical area covered		The whole of West Northamptonshire
Status		DPD
Will it be produced jointly with other authorities?		Yes
If yes, then with which authorities?		Daventry District, Northampton Borough and South Northamptonshire Councils
Chain of Conformity	1	PPSs and PPGs and Government Policy
	2	RSS
	3	Joint Core Strategy
	4=	All DPDs (prepared jointly or by individual authorities)
	10	Supplementary Planning Documents
Timetable for production and conformity with appropriate (regulations)		
Commencement of preparation		Sept 2006
Preparation of Scoping Report for the Sustainability Appraisal (SA) report		Oct 2006 - Jan 2007
Strategic Options and Issues (Pre-Submission consultation) (25)		March - Sept 2007
Public participation on Preferred Options and initial SA report (26)		Feb - March 2008
Submission of DPD and SA report (28)		August 2008
Pre-examination Meeting		December 2008
Independent examination (34)		Feb - March 2009
Adoption of document (36)		December 2009
Arrangements for Production		
Lead Authority/Division		Joint Planning Unit
Management Arrangements		Joint Programme Board/ Individual local authority and Joint Member Steering Groups/ Relevant Committee/ Cabinet/ Strategy Group / Council meetings
Resources		4.39 FTE per year for 4 years drawn from appropriate departments & divisions within the three Councils.
Interim Lead Officer		Principal Planning Officer – Northampton Borough Council. Phone: 01604 837384
Community Involvement		Through the adopted Statements of Community Involvement.

Northampton Implementation Area DPD													
Brief Description													
To set out site-specific allocations for housing, employment and other land uses and policies that will help in the determination of planning applications on specific sites and in the delivery of regeneration, growth and conservation objectives within the Northampton Implementation Area. It will include the identification and implementation of local infrastructure. It will include site-specific allocations within Northampton existing urban area and urban extensions as set out in the Joint Core Strategy. It will exclude Northampton Central Area and Sixfields.													
Geographical area covered	Covers the Northampton Implementation Area which is the entirety of Northampton Borough and neighbouring parts of Daventry District and South Northamptonshire District as defined by the Joint Core Strategy.												
Status	DPD												
Will it be produced jointly with other authorities?	Yes												
If yes, then with which authorities?	Daventry District, Northampton Borough and South Northamptonshire Councils												
Chain of Conformity	<table border="1"> <tr> <td>1</td> <td>PPSs and PPGs and Government Policy</td> </tr> <tr> <td>2</td> <td>RSS</td> </tr> <tr> <td>3</td> <td>Joint Core Strategy</td> </tr> <tr> <td>4</td> <td>Northampton Implementation Area DPD</td> </tr> <tr> <td>4=</td> <td>All DPDs (prepared jointly or by individual authorities)</td> </tr> <tr> <td>10</td> <td>Supplementary Planning Documents</td> </tr> </table>	1	PPSs and PPGs and Government Policy	2	RSS	3	Joint Core Strategy	4	Northampton Implementation Area DPD	4=	All DPDs (prepared jointly or by individual authorities)	10	Supplementary Planning Documents
1	PPSs and PPGs and Government Policy												
2	RSS												
3	Joint Core Strategy												
4	Northampton Implementation Area DPD												
4=	All DPDs (prepared jointly or by individual authorities)												
10	Supplementary Planning Documents												
Timetable for production and conformity with appropriate (regulations)													
Commencement of preparation	April 2007												
Preparation of Scoping Report for the Sustainability Appraisal (SA) report	May - July 2007												
Strategic Options and Issues (Pre-Submission consultation) (25)	Feb - April 2008												
Public participation on Preferred Options and initial SA report (26)	Oct - Dec 2008												
Submission of DPD and SA report (28)	September 2009												
Pre-examination Meeting	March 2010												
Independent examination (34)	May 2010												
Adoption of document (36)	February 2011												
Arrangements for Production													
Lead Authority/Division	Joint Planning Unit												
Management Arrangements	Joint Programme Board/ Individual local authority and Joint Member Steering Groups/ Relevant Committee/ Cabinet/ Strategy Group / Council meetings												
Resources	4.87 FTE over 4 years drawn from appropriate departments & divisions within the three Councils.												
Interim Lead Officer	Principal Planning Officer – Northampton Borough Council. Phone: 01604 837384												
Community Involvement	Through the adopted Statements of Community Involvement.												

West Northamptonshire Rural Areas DPD		
Brief Description		
To set out site-specific allocations for housing, employment, retail and other land uses and policies that will help in the determination of planning applications on specific sites within the Rural Areas. It will determine which settlements are in each category in the settlement hierarchy and plan for appropriate development, including defining town and village confines.		
Geographical area covered	Covers West Northamptonshire excluding the area covered by the Northampton Implementation Area DPD, the Daventry town DPD, the Brackley town DPD and the Towcester town DPD	
Status	DPD	
Will it be produced jointly with other authorities?	Yes	
If yes, then with which authorities?	Daventry District, Northampton Borough and South Northamptonshire Councils	
Chain of Conformity	1	PPSs and PPGs and Government Policy
	2	RSS
	3	Joint Core Strategy
	4=	West Northamptonshire Rural Areas
	4=	All DPDs (prepared jointly or by individual authorities)
	10	Supplementary Planning Documents
Timetable for production and conformity with appropriate (regulations)		
Commencement of preparation	October 2007	
Preparation of Scoping Report for the Sustainability Appraisal (SA) report	Nov 2007 – Jan 2008	
Strategic Options and Issues (Pre-Submission consultation) (25)	August – Oct 2008	
Public participation on Preferred Options and initial SA report (26)	April – June 2009	
Submission of DPD and SA report (28)	March 2010	
Pre-examination Meeting	September 2010	
Independent examination (34)	November 2010	
Adoption of document (36)	August 2011	
Arrangements for Production		
Lead Authority/Division	Joint Planning Unit	
Management Arrangements	Joint Programme Board/ Individual local authority and Joint Member Steering Groups/ Relevant Committee/ Cabinet/ Strategy Group / Council meetings or delegated power arrangements	
Resources	4.19 FTE over 4 years drawn from appropriate departments & divisions within the three Councils.	
Interim Lead Officer	Policy and Housing Strategy Manager – Daventry District Council. Phone: 01327 302582	
Community Involvement	Through the adopted Statements of Community Involvement.	

West Northamptonshire Development Control Policies DPD		
Brief Description		
To set out detailed policies against which planning applications for the development and use of land and buildings will be considered. It will include historic conservation, protection of open space, nature conservation, highway access, car parking and rural exception housing policies.		
Geographical area covered		Covers the entirety of West Northamptonshire.
Status		DPD
Will it be produced jointly with other authorities?		Yes
If yes, then with which authorities?		Daventry District, Northampton Borough and South Northamptonshire Councils
Chain of Conformity	1	PPSs and PPGs and Government Policy
	2	RSS
	3	Joint Core Strategy
	4=	Development Control Policies
	4=	All DPDs (prepared jointly or by individual authorities)
	10	Supplementary Planning Documents
Timetable for production and conformity with appropriate (regulations)		
Commencement of preparation		April 2008
Preparation of Scoping Report for the Sustainability Appraisal (SA) report		May – July 2008
Strategic Options and Issues (Pre-Submission consultation) (25)		Nov – Dec 2008
Public participation on Preferred Options and initial SA report (26)		April – June 2009
Submission of DPD and SA report (28)		December 2009
Pre-examination Meeting		April 2010
Independent examination (34)		May – June 2010
Adoption of document (36)		March 2011
Arrangements for Production		
Lead Authority/Division		Joint Planning Unit
Management Arrangements		Joint Programme Board/ Individual local authority and Joint Member Steering Groups/ Relevant Committee/ Cabinet/ Strategy Group / Council meetings or delegated power arrangements
Resources		2.93 FTE over 4 years drawn from appropriate departments & divisions within the three Councils.
Interim Lead Officer		Policy and Implementation Manager – South Northamptonshire Council. Phone: 01327 322268
Community Involvement		Through the adopted Statements of Community Involvement.

Energy Efficiency and Renewable Energy SPD		
Brief Description		
To provide guidance on how to incorporate energy conservation measures and opportunities for the use of renewable energy in new development.		
Geographical area covered		The whole of Daventry District and South Northamptonshire District administrative areas.
Status		SPD
Will it be produced jointly with other authorities?		Yes
If yes, then with which authorities?		Daventry District and South Northamptonshire Councils
Chain of Conformity	1	PPSs and PPGs and Government Policy
	2	RSS
	3	Joint Core Strategy
	4=	All DPDs (prepared jointly or by individual authorities)
	5	Supplementary Planning Documents
Timetable for production and conformity with appropriate (regulations)		
Commencement of preparation		September 2006
Consultation on draft SPD and SA Report (17)		Dec 2006 – Jan 2007
Consideration of representations (18)		February 2007
Adoption of SPD (19)		March 2007
Arrangements for Production		
Lead Authority/Division		Daventry District Council & South Northamptonshire Council
Management Arrangements		Individual local authority Member Steering Groups/ Relevant Strategy Group meetings or delegated power arrangements
Resources		Appropriate departments & divisions within the two district councils.
Interim Lead Officer		Policy and Housing Strategy Manager – Daventry District Council. Phone: 01327 302582
Community Involvement		Through the adopted Statements of Community Involvement.

West Northamptonshire Affordable Housing SPD		
Brief Description		
To provide guidance to assist all parties involved (the three Councils, developers, landowners and Registered Social Landlords) in the delivery of affordable housing through new development. It will include proportions of market and affordable dwellings, size and type of affordable housing, and the range of circumstances in which affordable housing will be required.		
Geographical area covered		Covers the entirety of West Northamptonshire
Status		SPD
Will it be produced jointly with other authorities?		Yes
If yes, then with which authorities?		Daventry District, Northampton Borough and South Northamptonshire Councils
Chain of Conformity	1	PPSs and PPGs and Government Policy
	2	RSS
	3	Joint Core Strategy
	4=	All DPDs (prepared jointly or by individual authorities)
	10	Supplementary Planning Documents
Timetable for production and conformity with appropriate (regulations)		
Commencement of preparation		March 2007
Consultation on draft SPD and SA Report (17)		August - Sept 2007
Consideration of representations (18)		October 2007
Adoption of SPD (19)		November 2007
Arrangements for Production		
Lead Authority/Division		Joint Planning Unit
Management Arrangements		Joint Programme Board/ Individual local authority and Joint Member Steering Groups/ Relevant Committee/ Cabinet/ Strategy Group / Council meetings or delegated power arrangements
Resources		0.5 FTE drawn from appropriate departments & divisions within the three Councils.
Interim Lead Officer		Policy and Housing Strategy Manager – Daventry District Council. Phone: 01327 302582
Community Involvement		Through the adopted Statements of Community Involvement.

Appendix 4

Profile of Daventry District Council's Local Development Documents

Daventry Town DPD		
Brief Description		
To set out site-specific allocations for housing, employment, retail and other land uses and policies that will help in the determination of planning applications on specific sites and in the delivery of regeneration, growth and conservation objectives within Daventry Town. It will include the identification and implementation of local infrastructure. It will include site-specific allocations within Daventry existing urban area and urban extensions as set out in the Joint Core Strategy.		
Geographical area covered	Covers the entirety of Daventry Town and adjoining area. Exact area to be determined as work progresses	
Status	DPD	
Will it be produced jointly with other authorities?	No	
If yes, then with which authorities?		
Chain of Conformity	1	PPSs and PPGs and Government Policy
	2	RSS
	3	Joint Core Strategy
	4=	Daventry Town DPD
	4=	All DPDs (prepared jointly or by individual authorities)
	10	Supplementary Planning Documents
Timetable for production and conformity with appropriate (regulations)		
Commencement of preparation	April 2007	
Preparation of Scoping Report for the Sustainability Appraisal (SA) report	May – July 2007	
Strategic Options and Issues (Pre-Submission consultation) (25)	Feb – April 2008	
Public participation on Preferred Options and initial SA report (26)	Oct – Dec 2008	
Submission of DPD and SA report (28)	September 2009	
Pre-examination Meeting	March 2010	
Independent examination (34)	May 2010	
Adoption of document (36)	February 2011	
Arrangements for Production		
Lead Authority/Division	Daventry District Council	
Management Arrangements	Strategy Group and Council meetings	
Resources	3.55 FTE over four years drawn from within the District Council.	
Community Involvement	Through the adopted Statement of Community Involvement.	

Development Guidance for Middlemore Site 6 SPD		
Brief Description		
To provide more detailed guidance for Site 6 at Middlemore to the north of Daventry town which has the benefit of outline planning permission.		
Geographical area covered	Site 6 at Middlemore housing area	
Status	SPD	
Will it be produced jointly with other authorities?	No	
If yes, then with which authorities?		
Chain of Conformity	1	PPSs and PPGs and Government Policy
	2	RSS
	3	Joint Core Strategy
	4=	All DPDs (prepared jointly or by individual authorities)
	5	Supplementary Planning Documents
Timetable for production and conformity with appropriate (regulations)		
Commencement of preparation	September 06	
Consultation on draft SPD and SA Report (17)	Dec 2006 - Jan 2007	
Consideration of representations (18)	February 2007	
Adoption of SPD (19)	March 2007	
Arrangements for Production		
Lead Authority/Division	Daventry District Council	
Management Arrangements	Strategy Group and Council meetings	
Resources	Appropriate resources from within the District Council.	
Community Involvement	Through the adopted Statement of Community Involvement.	

Development Guidance for Middlemore Sites 7-9 SPD		
Brief Description		
To provide more detailed guidance for Sites 7 – 9 at Middlemore to the north of Daventry town which has the benefit of outline planning permission.		
Geographical area covered	Sites 7-9 at Middlemore housing area	
Status	SPD	
Will it be produced jointly with other authorities?	No	
If yes, then with which authorities?		
Chain of Conformity	1	PPSs and PPGs and Government Policy
	2	RSS
	3	Joint Core Strategy
	4=	All DPDs (prepared jointly or by individual authorities))
	5	Supplementary Planning Documents
Timetable for production and conformity with appropriate (regulations)		
Commencement of preparation	June 2007	
Consultation on draft SPD and SA Report (17)	Nov 2007 - Dec 2007	
Consideration of representations (18)	January 2008	
Adoption of SPD (19)	February 2008	
Arrangements for Production		
Lead Authority/Division	Daventry District Council	
Management Arrangements	Strategy Group and Council meetings	
Resources	0.12 FTE drawn from within the District Council.	
Community Involvement	Through the adopted Statement of Community Involvement.	

Town/ Village Design Statements SPD	
Brief Description	
To provide design guidance to inform proposals for development.	
Geographical area covered	Subject to progress being made by community groups, the following areas will be covered: Daventry Town, Clipston, Flore, Holcott, Hollowell and Teeton, Long Buckby, Naseby, Overstone, Scaldwell, Sibbertoft, Whitton and Weedon, in Daventry District.
Status	SPD
Will it be produced jointly with other authorities?	No
If yes, then with which authorities?	
Chain of Conformity	1 PPSs and PPGs and Government Policy
	2 RSS
	3 Joint Core Strategy
	4= All DPDs (prepared jointly or by individual authorities)
	5 Supplementary Planning Documents
Timetable for production and conformity with appropriate (regulations)	
Commencement of preparation	June 2007/08/09/10/11
Consultation on draft SPD and SA Report (17)	Nov – Dec 2007/08/09/10
Consideration of representations (18)	January 2008/09/10/11
Adoption of SPD (19)	February 2008/09/10/11
Arrangements for Production	
Lead Authority/Division	Daventry District Council
Management Arrangements	Full Council will adopt SPD. Local community will determine how the project is managed
Resources	Limited resources required. Ad-hoc assistance from officers to support community groups and to undertake editing of draft documents. Local community will undertake and fund preparation of VDS
Community Involvement	Through the adopted Statement of Community Involvement.

Appendix 5

Profile of Northampton Borough Council's Local Development Documents

Central Area Action Plan DPD		
Brief Description		
To set out site-specific allocations for housing, employment, retail and other land uses and policies that will help in the determination of planning applications on specific sites and in the delivery of regeneration, growth and conservation objectives within Northampton town centre. It will include the identification and implementation of local infrastructure.		
Geographical area covered	Covering Northampton town centre. Exact area to be determined as work progresses.	
Status	DPD	
Will it be produced jointly with other authorities?	No	
If yes, then with which authorities?		
Chain of Conformity	1	PPSs and PPGs and Government Policy
	2	RSS
	3	Joint Core Strategy
	4=	Central Area Action Plan
	4=	All DPDs (prepared jointly or by individual authorities))
	10	Supplementary Planning Documents
Timetable for production and conformity with appropriate (regulations)		
Commencement of preparation	November 2006	
Preparation of Scoping Report for the Sustainability Appraisal (SA) report	Dec 2006 – March 2007	
Strategic Options and Issues (Pre-Submission consultation) (25)	June – July 2007	
Public participation on Preferred Options and initial SA report (26)	Dec 2007 – Jan 2008	
Submission of DPD and SA report (28)	November 2008	
Pre-examination Meeting	April 2009	
Independent examination (34)	June - July 2009	
Adoption of document (36)	May 2010	
Arrangements for Production		
Lead Authority/Division	Northampton Borough Council/ Regeneration, Growth & Community Development	
Management Arrangements	LDD Steering Group/Cabinet	
Resources	4.55 FTE over four years drawn from within the Borough Council. Co-operation with other Local Authorities on transferable issues and solutions.	
Community Involvement	Through the adopted Statement of Community Involvement.	

Sixfields Area Action Plan DPD		
Brief Description		
To set out site-specific allocations for housing, employment, retail and other land uses and policies that will help in the determination of planning applications on specific sites and in the delivery of regeneration, growth and conservation objectives in the Sixfields area. It will include the identification and implementation of local infrastructure.		
Geographical area covered	Covering the Sixfields area. Exact area to be determined as work progresses.	
Status	DPD	
Will it be produced jointly with other authorities?	No	
If yes, then with which authorities?		
Chain of Conformity	1	PPSs and PPGs and Government Policy
	2	RSS
	3	Joint Core Strategy
	4=	Sixfields Area Action Plan
	4=	All DPDs (prepared jointly or by individual authorities)
	10	Supplementary Planning Documents
Timetable for production and conformity with appropriate (regulations)		
Commencement of preparation	April 2007	
Preparation of Scoping Report for the Sustainability Appraisal (SA) report	May - July 2007	
Strategic Options and Issues (Pre-Submission consultation) (25)	Feb - April 2008	
Public participation on Preferred Options and initial SA report (26)	Oct - Dec 2008	
Submission of DPD and SA report (28)	September 2009	
Pre-examination Meeting	March 2010	
Independent examination (34)	May 2010	
Adoption of document (36)	February 2011	
Arrangements for Production		
Lead Authority/Division	Northampton Borough Council/ Regeneration, Growth & Community Development	
Management Arrangements	LDD Steering Group/Cabinet	
Resources	4.32 FTE over four years drawn from within the Borough Council. Co-operation with other Local Authorities on transferable issues and solutions.	
Community Involvement	Through the adopted Statement of Community Involvement.	

Appendix 6

Profile of South Northamptonshire Council's Local Development Documents

Towcester Town DPD		
Brief Description		
To set out site-specific allocations for housing, employment, retail and other land uses and policies that will help in the determination of planning applications on specific sites and in the delivery of regeneration, growth and conservation objectives within Towcester Town. It will include site-specific allocations within Towcester existing urban area and urban extensions as set out in the Joint Core Strategy. It will determine the line and phasing of the A5 Towcester Bypass.		
Geographical area covered	Covers the entirety of Towcester Town and adjoining area. Exact area to be determined as work progresses.	
Status	DPD	
Will it be produced jointly with other authorities?	No	
If yes, then with which authorities?		
Chain of Conformity	1	PPSs and PPGs and Government Policy
	2	RSS
	3	Joint Core Strategy
	4=	Towcester Town DPD
	4=	All DPDs (prepared jointly or by individual authorities)
	10	Supplementary Planning Documents
Timetable for production and conformity with appropriate (regulations)		
Commencement of preparation	April 2007	
Preparation of Scoping Report for the Sustainability Appraisal (SA) report	May – July 2007	
Strategic Options and Issues (Pre-Submission consultation) (25)	Feb - April 2008	
Public participation on Preferred Options and initial SA report (26)	Oct - Dec 2008	
Submission of DPD and SA report (28)	September 2009	
Pre-examination Meeting	March 2010	
Independent examination (34)	May 2010	
Adoption of document (36)	February 2011	
Arrangements for Production		
Lead Authority/Division	South Northamptonshire Council Planning and Leisure Division	
Management Arrangements	LDF Steering Group/ Cabinet and Full Council	
Resources	3.75 FTE over four years drawn from Policy Team and Development Control Teams. Co-operation with other Local Authorities on transferable issues and solutions.	
Community Involvement	Through the adopted Statement of Community Involvement.	

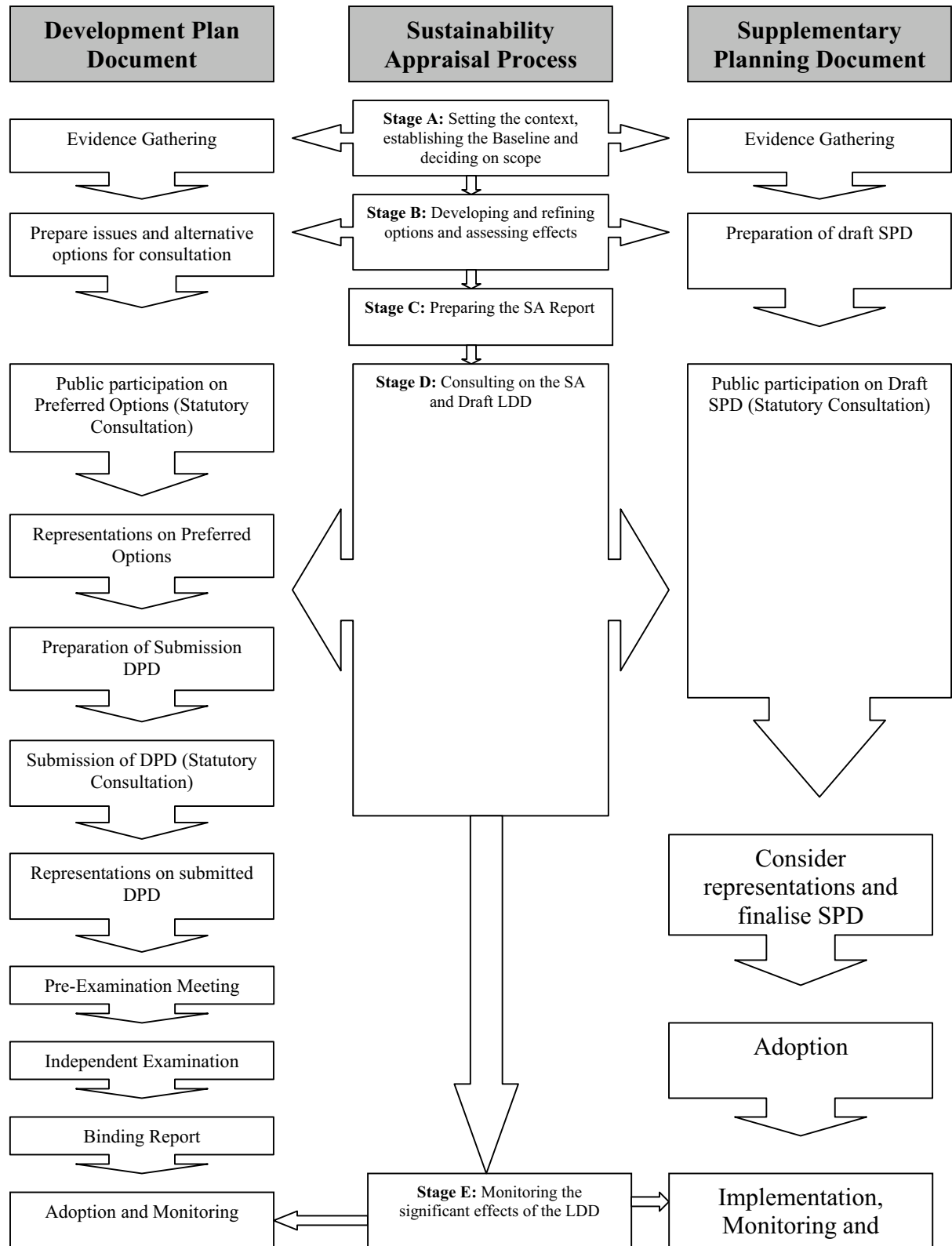
Brackley Town DPD	
Brief Description	
To set out site-specific allocations for housing, employment, retail and other land uses and policies that will help in the determination of planning applications on specific sites and in the delivery of regeneration, growth and conservation objectives within Brackley Town. It will include the identification and implementation of local infrastructure. It will include site-specific allocations within Brackley existing urban area and urban extensions as set out in the Joint Core Strategy.	
Geographical area covered	Covers the entirety of Brackley Town and adjoining area. Exact area to be determined as work progresses.
Status	DPD
Will it be produced jointly with other authorities?	No
If yes, then with which authorities?	
Chain of Conformity	1 PPSs and PPGs and Government Policy
	2 RSS
	3 Joint Core Strategy
	4= Brackley Town DPD
	4= All DPDs (prepared jointly or by individual authorities)
	10 Supplementary Planning Documents
Timetable for production and conformity with appropriate (regulations)	
Commencement of preparation	April 2007
Preparation of Scoping Report for the Sustainability Appraisal (SA) report	May – July 2007
Strategic Options and Issues (Pre-Submission consultation) (25)	Feb - April 2008
Public participation on Preferred Options and initial SA report (26)	Oct - Dec 2008
Submission of DPD and SA report (28)	September 2009
Pre-examination Meeting	March 2010
Independent examination (34)	May 2010
Adoption of document (36)	February 2011
Arrangements for Production	
Lead Authority/Division	South Northamptonshire Council Planning and Leisure Division
Management Arrangements	LDF Steering Group/ Cabinet and Full Council
Resources	3.28 FTE over four years drawn from Policy Team and Development Control Teams. Co-operation with other Local Authorities on transferable issues and solutions.
Community Involvement	Through the adopted Statement of Community Involvement.

Moat Lane, Towcester SPD		
Brief Description		
Guidance covering the regeneration of the Moat Lane area of Towcester town centre.		
Geographical area covered	Moat Lane Towcester	
Status	SPD	
Will it be produced jointly with other authorities?	No	
If yes, then with which authorities?		
Chain of Conformity	1	PPSs and PPGs and Government Policy
	2	RSS
	3	Joint Core Strategy
	4=	All DPDs (prepared jointly or by individual authorities)
	5	Supplementary Planning Documents
Timetable for production and conformity with appropriate (regulations)		
Commencement of preparation	October 2006	
Consultation on draft SPD and SA Report (17)	March – April 2007	
Consideration of representations (18)	May 2007	
Adoption of SPD (19)	June 2007	
Arrangements for Production		
Lead Authority/Division	South Northamptonshire Council Planning and Leisure Division	
Management Arrangements	LDF Steering Group and appropriate delegated powers	
Resources	0.07 FTE drawn from the Policy Team	
Community Involvement	Through the adopted Statement of Community Involvement.	

Silverstone Circuit SPD		
Brief Description		
Guidance covering the future development of Silverstone Circuit		
Geographical area covered	Covers the entirety of Silverstone Circuit which is in South Northamptonshire and Aylesbury Vale Districts	
Status	SPD	
Will it be produced jointly with other authorities?	Yes	
If yes, then with which authorities?	Aylesbury Vale District Council	
Chain of Conformity	1	PPSs and PPGs and Government Policy
	2	RSS
	3	Joint Core Strategy
	4=	All DPDs (prepared jointly or by individual authorities)
	5	Supplementary Planning Documents
Timetable for production and conformity with appropriate (regulations)		
Commencement of preparation	March 2007	
Consultation on draft SPD and SA Report (17)	Aug - Sept 2007	
Consideration of representations (18)	October 2007	
Adoption of SPD (19)	November 2007	
Arrangements for Production		
Lead Authority/Division	South Northamptonshire Council Planning and Leisure Division & Aylesbury Vale District Council	
Management Arrangements	LDF Steering Group and appropriate delegated powers	
Resources	0.09 FTE drawn from Policy Team and Development Control Teams	
Community Involvement	Through the adopted Statement of Community Involvement.	

Appendix 7

Sustainability Appraisal and the Development Plan Process



Appendix 8

Saved Supplementary Planning Guidance

Countywide Saved SPG

Parking (2003)
Planning Obligations and Local Education Authority School Provision (June 2004)
Planning Out Crime in Northamptonshire (2003)

Daventry District Council Saved SPG

Boughton Village Design Statement (VDS) (2003)
Brixworth VDS (2004)
Creaton VDS (2004)
Crick VDS (2004)
Farthingstone VDS (2004)
Ravensthorpe VDS (1999)
Boughton Conservation Area Appraisal (2002)
Grand Union/Oxford Canal Conservation Area (1995)
Moulton Conservation Area Appraisal and Design Guide (1997)
Scaldwell Conservation Area Appraisal and Design Guide (1998)
DIRFT Phase 1 Development Brief
Middlemore 1 Development Brief (2001)
Middlemore 2 Development Brief (2001)
Middlemore 3a Development Brief (2001)
Middlemore 3b Development Brief (2001)
Middlemore 3c Development Brief (2002)
Middlemore 5a Development Brief (2004)
Infrastructure Interim SPD (2004)
Braunston Canal Strategy (2000)
Church Brampton (Residential Development Guidelines) (1997)
Daventry Conservation Area Shopfront Design Guide
Design and Location of Agricultural Buildings (1999)
Shopfront Security
Designing House extensions (1997)
The Retention of Playing Pitches (2000)

Northampton Borough Council Saved SPG

Delapre Abbey
Residential Extension Design Guide
Shop Front Design Guide

South Northamptonshire District Council Saved SPG

Advertisements (Feb 1996)
Affordable Housing (Dec 2003)^(*)
Backland Development (March 2004)^(*)
College Place, Brackley, Development Brief (Sept 2002)
Conservation Areas (March 1998)
Developer Contributions (Aug 2001)^(*)
Elementis Pigments Site, Deanshanger, Planning Brief (April 2001)

Farm Diversification (Feb 1996)^(*)
Grange Park, Courteenhall Planning Brief (Sept 1997)
Horse Related Development (June 1999)^(*)
Light Pollution (Oct 1998)
Listed Buildings (Aug 2002)
Moat Lane, Towcester, Planning Brief (Dec 2002)
Nature Conservation (Feb 1996)
Northamptonshire Canal Partnership Strategy (Aug 1999)
Paulerspury and Pury End Village Design Statement (2005)
Radstone Technology, Towcester, Planning Brief (Jan 2003)
Residential Design In the Countryside: Planning Guidance Notes and Village Design Guides (Jan 1996)^(*)
Reuse of Rural Buildings (April 2005)
Residential Extensions (Sept 1998)^(*)
Roofscapes (Sept 1998)
Satellite Dishes (May 2002)
Shop Fronts (Feb 1996)
Silverstone Circuit Planning Brief (2005)
Silverstone Campsite Appraisal (Nov 2003)
Springfield Way, Brackley (July 2002)
Sun Moon and Stars, Blisworth, Planning Brief (June 2004)
Telecommunications (Nov 2002)
Thatching (Feb 1996)
Trees and Development (Feb 1996)
Trees in Conservation Areas and TPO's (March 2001)
Walkerpack, Roade, Planning Brief (May 2004)
Whittlebury Design Statement (Feb 1999)
Windows and Doors (Feb 1996)
Working From Home (November 1998)

Appendix 9

Evidence Base

County Wide

- Northamptonshire Local Transport Plan 2006
- Northamptonshire Landscape Character Assessment
- Northamptonshire Green Infrastructure
- Northamptonshire Joint Waste Management Strategy 2001
- Northamptonshire Commercial Property and Employment Land Assessment
- Northamptonshire Biodiversity Action Plan
- Northamptonshire Gypsy and Travellers' Accommodation and Needs Assessment

West Northamptonshire

- Northampton Longer Term Growth Options Study
- West Northamptonshire Housing Market Assessment
- Northampton Multi Model Study Update
- Strategic Flood Risk Assessment and Water Cycle Study
- South Northamptonshire and Daventry Crime and Disorder Strategy

Daventry District Council

- Issues Paper 2002
- Daventry District Transport Strategy 2001
- Model Development Areas 2004
- Retail Study 2003
- Housing Needs Survey 2006
- Town Centre Vision 2004
- Daventry District Council Annual Monitoring Report 2005
- Daventry LDF Core Strategy Issues and Options 2005
- Daventry Community Strategy 2006
- Daventry Urban Capacity Study 2004
- Sport and Recreation Audit and Assessment
- Daventry Housing Strategy 2003
- Daventry Economic Development Strategy 2003
- Daventry Rural Revival Strategy 2003
- Sports Development Strategy 2005

Northampton Borough Council

- Urban Capacity Study 2002 (2003)
- Northampton Shopping Study Update (2004)
- Strategic Flood Risk Assessment (2004)
- Playing Pitch Strategy (2005)
- Northampton Community Strategy (2002)
- South West District Review (2004)
- Allotments Strategy (2004)

- Open Space, Sport and Recreation Assessment and Needs Audit (2006)
- Northampton Employment Land Study (2006)
- Central Area Design, Development and Movement Framework (2006)
- Northampton Housing Strategy
- Northampton Housing Needs Survey

South Northamptonshire Council

- Infrastructure Assessment for Towcester and Brackley
- Issues Papers (2001)
- Issues Report (2004)
- South Northamptonshire LDF Core Strategy Issues and Options (2005)
- South Northamptonshire LDF Annual Monitoring Report 2005
- Parish Action Plans
- Public Open Space Strategy
- Retail Studies for Brackley and Towcester
- South Northamptonshire Communications Strategy
- South Northamptonshire Community Safety Strategy
- South Northamptonshire Community Strategy
- South Northamptonshire Consultation Strategy
- South Northamptonshire Cultural Strategy
- South Northamptonshire Economic Development Strategy
- South Northamptonshire Environment Strategy
- South Northamptonshire Household Survey
- South Northamptonshire Housing Needs Study
- South Northamptonshire Housing Strategy
- South Northamptonshire Performance Plan
- South Northamptonshire Social Inclusion Strategy
- Urban Capacity Studies for Brackley and Towcester (2005)
- Towcester MMS
- Nathaniel Litchfield Towcester reports
- Northampton Longer Term Growth Study
- Northampton Multi Modal Study Update

Appendix 10

Composite timetable for the preparation of LDDs

Scoping Report for Sustainability Appraisal (SA)	S	Submission of DPD and SA Report and consultation	R	Public participation on site allocation representations
ation on draft SPD and SA Report	M	Pre-Examination Meeting		
ons and Issues (Pre-Submission consultation)	X	Independent Examination		

C	Commencement of preparation of DPD	P	Public participation on Preferred Options and initial SA Report	A	Adoption of document
E	Preparation of Scoping Report for Sustainability Appraisal (SA) Report	S	Submission of DPD and SA Report and consultation	R	Public participation on site allocation representations
D	Public consultation on draft SPD and SA Report	M	Pre-Examination Meeting		
O	Strategic Options and Issues (Pre-Submission consultation)	X	Independent Examination		

Agenda Item 6

EXEMPT INFORMATION BY VIRTUE OF
PARAGRAPH(S)3 OF PART 1 OF SCHEDULE 12A
OF THE LOCAL GOVERNMENT ACT 1972.

Document is Restricted

Agenda Item 7

EXEMPT INFORMATION BY VIRTUE OF
PARAGRAPH(S)3 OF PART 1 OF SCHEDULE 12A
OF THE LOCAL GOVERNMENT ACT 1972.

Document is Restricted